

# ALPHA PI PHI

## RITUAL LOOKBOOK

---



---

EDITION I

# TABLE OF CONTENTS

---

Makeup	3
Hair	4
Jewelry	6
Nylons/Socks	7
 New Member Attire	
Dresses	8
Rompers/Jumpsuits	10
Shirts	11
Bottoms	12
Cardigans/Blazers	13
 Initiated Member Attire	
Dresses	14
Rompers/Jumpsuits	16
Shirts	17
Bottoms	18
Cardigans/Blazers	19
 Shoes	20
Pins/Stoles	21



The standard for ritual attire for all membership classes is listed within **Option A** or **Option B**. Ritual attire is for all membership classes including PNMs, AMPPs, active members, distant members, and alumnae members.

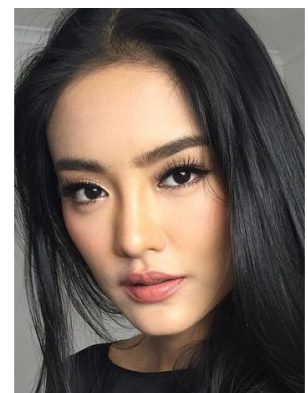
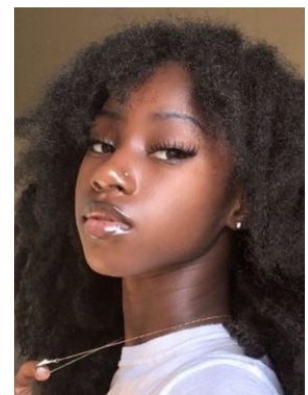
Ritual attire is up to the discretion of the Chapter Executive Council and ultimately up to the International President and the International Keeper of the Ritual.

Please contact ICAPP with any questions or concerns.

*president@alphapihi.com*  
*ritual@alphapihi.com*

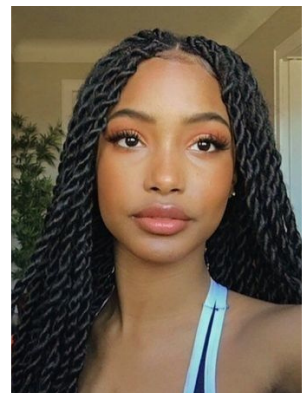
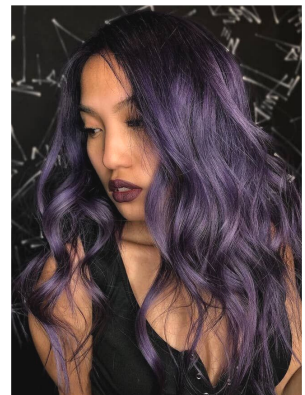
# MAKEUP

Makeup should be neat and polished. Only neutral-coloured makeup is allowed; black eyeliner and mascara are permitted. Eyelash extensions and false eyelashes are permitted.



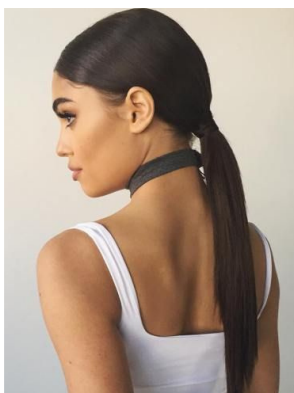
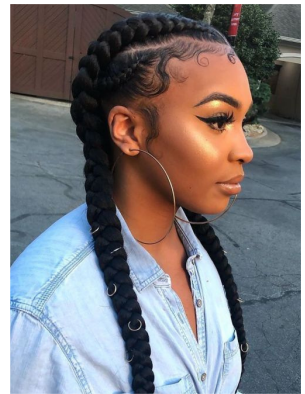
# HAIR

Hair must be clean and well-groomed. Hair may be styled using heat tools, if desired. New members may wear a small white bow or simple white headband. Initiated sisters may wear a small black bow or simple black headband. Religious head coverings may be worn and should be black or neutral in colour.





# HAIR



# JEWELRY

Stud earrings and dangle earrings up to 1 inch in length are permitted.



Simple, pendant necklaces or up to three strands of pearls are allowed. Necklaces cannot hang lower than cleavage.



Wedding and engagement rings are permitted. Any additional bracelets, rings, anklets, and other jewelry should be removed.



# NYLONS/SOCKS

## OPTION A

Nylons must be footed tights that sit on the hips. Must be nude in colour to match skin tone; nylons cannot be black or white.



## OPTION B

Knee-high socks or footed tights that sit on the hips are required to be worn. Footed tights that sit on the hips must be worn with shorts or a romper. Knee-high socks are permitted with pants or a jumpsuit. All must be nude in colour to match skin tone; cannot be black or white.



# DRESSES

## NEW MEMBER ATTIRE — OPTION A

The dress must be entirely white and can be made of any material. Off-white, ivory, and cream dresses are not permitted. A white lace overlay is permitted; no beadwork or sequins are allowed.

The dress must be a simple cut with two straps or sleeves; no cutouts are permitted. Must have a modest neckline and cannot show cleavage. Dress must be around knee length and must be longer than fingertips. Dress may cover the entire knee. Zippers must be white, silver, or gold and must be on the back or side of the dress.

A thin white belt with a white, silver, or gold buckle is permitted. All undergarments, inclusive of bra straps, should not be visible.



# DRESSES





# ROMPERS/JUMPSUITS

## NEW MEMBER ATTIRE — OPTION B

The romper or jumpsuit must be entirely white and can be made of any material. Off-white, ivory, and cream garments are not permitted. A white lace overlay is permitted; no beadwork or sequins are allowed.

The garment must be a simple cut with two straps or sleeves; no cutouts are permitted. Must have a modest neckline and cannot show cleavage. Rompers must be longer than fingertips. Zippers must be white, silver, or gold and must be on the back or side of the garment. Buttons must be white or off-white in colour.

A thin white belt with a white, silver, or gold buckle is permitted. All undergarments, inclusive of bra straps, should not be visible.



# SHIRTS

## NEW MEMBER ATTIRE — OPTION B

The shirt must be entirely white and can be made of any material. Off-white, ivory, and cream shirts are not permitted. The shirt must be opaque and cannot be sheer or see-through. The shirt must be a simple cut with two straps or sleeves; no cutouts are permitted. Must have a modest neckline and cannot show cleavage.

Blouses and long sleeve button-up shirts are permitted. Buttons must be white or off-white in colour. Shirt must be entirely tucked into bottoms. Undergarments, inclusive of bra straps, should not be visible at any time.



# BOTTOMS

## NEW MEMBER ATTIRE — OPTION B

Bottoms may consist of white dress pants or white shorts made of linen or dress pant material. Shorts must reach fingertips and pants must reach at least mid-shin length. Bottoms cannot be leggings, jeans, or any casual pants; chinos are allowable. Bottoms cannot have rips or cutouts. A white belt with a white, silver, or gold buckle may be worn if bottoms have belt loops. Undergarments should not be visible at any time.





# CARDIGANS/BLAZERS

## NEW MEMBER ATTIRE

Cardigans, blazers, sportcoats, and suit jackets are permitted and must be entirely white. Small buttons are allowable and must be white or off-white in colour. Cardigans and jackets should be around waist length and should not exceed fingertip length. A cardigan or jacket can be worn to cover any cutouts or other infractions.



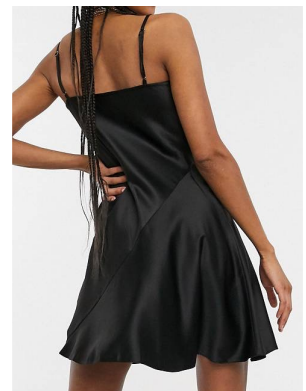
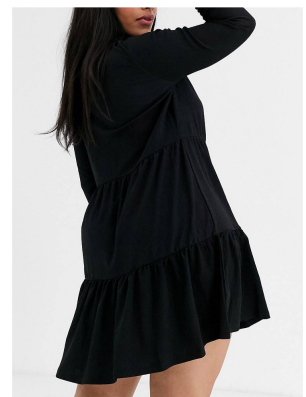
# DRESSES

## INITIATED MEMBER ATTIRE — OPTION A

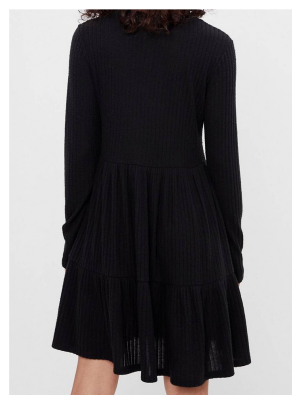
The dress must be entirely black and can be made of any material. Dark gray, brown, or navy dresses are not permitted. A black lace overlay is permitted; no beadwork or sequins are allowed.

The dress must be a simple cut with two straps or sleeves; no cutouts are permitted. Must have a modest neckline and cannot show cleavage. Dress must be around knee length and must be longer than fingertips. Dress may cover the entire knee. Zippers must be black, silver, or gold and must be on the back or side of the dress.

A thin black belt with a black, silver, or gold buckle is permitted. Undergarments, inclusive of bra straps, should not be visible.



# DRESSES





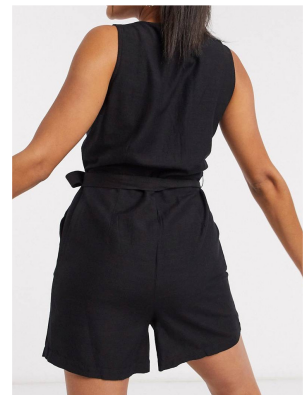
# ROMPERS/JUMPSUITS

## INITIATED MEMBER ATTIRE — OPTION B

The romper or jumpsuit must be entirely black and can be made of any material. Dark gray, brown, or navy garments are not permitted. A black lace overlay is permitted; no beadwork or sequins are allowed.

The garment must be a simple cut with two straps or sleeves; no cutouts are permitted. Must have a modest neckline and cannot show cleavage. Rompers must be longer than fingertips. Zippers must be black, silver, or gold and must be on the back or side of the garment. Buttons must be black or off-black in colour.

A thin black belt with a black, silver, or gold buckle is permitted. Undergarments, inclusive of bra straps, should not be visible.



# SHIRTS

## INITIATED MEMBER ATTIRE — OPTION B

The shirt must be entirely black and can be made of any material. Dark gray, brown, and navy shirts are not permitted. The shirt must be opaque and cannot be sheer or see-through. The shirt must be a simple cut with two straps or sleeves; no cutouts are permitted. Must have a modest neckline and cannot show cleavage.

Blouses and long sleeve button-up shirts are permitted. Buttons must be black or off-black in colour. Shirt must be entirely tucked into bottoms. Undergarments, inclusive of bra straps, should not be visible at any time.

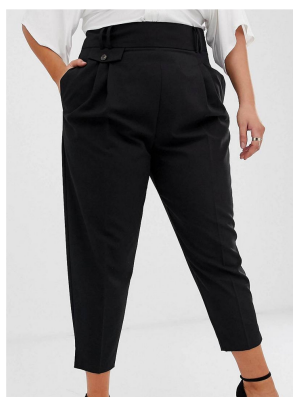




# BOTTOMS

## INITIATED MEMBER ATTIRE — OPTION B

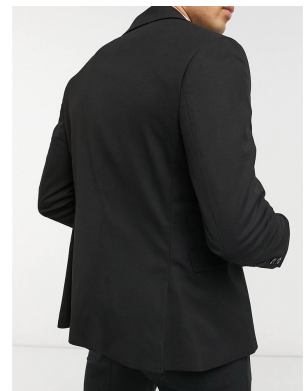
Bottoms may consist of black dress pants or black shorts made of linen or dress pant material. Shorts must reach fingertips and pants must reach at least mid-shin length. Bottoms cannot be leggings, jeans, or any casual pants; chinos are allowable. Bottoms cannot have rips or cutouts. A black belt with a black, silver, or gold buckle must be worn if bottoms have belt loops. Undergarments should not be visible at any time.



# CARDIGANS/BLAZERS

## INITIATED MEMBER ATTIRE

Cardigans, blazers, sportcoats, and suit jackets are permitted and must be entirely black. Small buttons are allowable and must be black or off-black in colour. Cardigans and jackets should be around waist length and should not exceed fingertip length. A cardigan or jacket can be worn to cover any cutouts or other infractions.



# SHOES

## OPTION A

Must be black, closed-toe dress shoes. Flats, heels, and wedges are permitted. Boots, sneakers, sandals, and other shoes are not allowed.

## OPTION B

All previously listed footwear as well as dress shoes with laces are allowed.



OPTION B



# PINS/STOLES

Pins are required to be worn for ritual ceremonies. The pin should be worn on the left side, over the heart. New members wear the Cygnet pin while initiated sisters wear the Membership pin. Refer to the Alpha Pi Phi Pin Policy for additional details.

Alumnae members are permitted to wear their Alpha Pi Phi graduation stole during all ritual ceremonies. The Membership pin and any additional pin paraphernalia must be placed on top of the stole.

## How to place the Cygnet or Membership pin:

1. Place your right thumb at the base of your throat and allow your hand to spread naturally over your heart.
2. Place the Cygnet or Membership pin in the location of the base of your ring finger on your right hand.
3. Additional paraphernalia is placed in relation to the Membership pin.



